

Overview of Testing Results for Lead in Drinking Water and Corrective Actions for Naval Support Activity Hampton Roads CDC (Building SDA330)

The Navy is committed to maintaining safe drinking water on its installations. City water supplied to the Navy and the Navy's water distribution system is regularly tested and in compliance with the Safe Drinking Water Act. Because lead exposure is a particular concern for children, and lead may be added to drinking water through the pipes, fittings, solder, and fixtures inside a building, the Environmental Protection Agency (EPA) recommends, but does not mandate, that we test the lead content of drinking water in priority areas such as youth centers (YCs), child development group homes (CDGHs), and child development centers (CDCs). The Navy has adopted the recommendation as policy.

Navy environmental personnel conducted lead testing at the Naval Support Activity Hampton Roads CDC in accordance with Navy and EPA guidelines. Samples from various locations in the CDC were sent to a state-certified laboratory for analysis.

At the Naval Support Activity Hampton Roads CDC, outlets used for drinking, cooking, and washing were tested. Out of 7 samples collected, no water outlets tested above the EPA-recommended screening level for lead in drinking water in schools and childcare centers of 20 parts per billion (ppb).

A copy of all test results is enclosed for your information. The test results are presented in two tables:

- Table 1 **Summary of Results** summarizes the data by category of use (e.g., drinking, cooking, washing).
- Table 2 **Summary Statistics** summarizes all the data.

A floor plan of the Naval Support Activity Hampton Roads CDC has also been included to show the locations of the fixtures that were sampled.

Table 1 provides a description of each sampling location using three columns; *Category*, *Sampling ID*, and *Outlet Description*. The *Category* column gives information about whether the outlet is used for drinking water (water fountain), cooking (food preparation), or washing (primarily hand-washing or brushing teeth). The *Sample ID* column is the identification used to label each sample bottle. The *Outlet Description* column contains additional information to describe the outlet sampled under each category.

The next set of columns in **Table 1** provide *Initial Sampling Results*, and for those locations that exceeded the recommended screening level of 20 ppb the *Re-sampling Results*.

EPA sampling protocol requires water to not be used for between 8 and 18 hours prior to first draw sampling. Therefore, *Initial Sampling Results* were from first draw samples collected early in the morning before the CDC opened and before any water was used. The *Initial Sampling Results* also indicate whether resampling is required and the date that fixtures greater than 20 ppb were secured.

The *Re-sampling Results*, *Corrective Actions*, and *Post Remediation Sampling Results* columns are annotated N/A (not applicable) since all the samples at the Naval Support Activity Hampton Roads CDC were within EPA recommended levels.

To learn more about lead in drinking water in schools and day care centers visit the following EPA website: <https://www.epa.gov/dwreginfo/lead-drinking-water-schools-and-child-care-facilities>.

To learn more about your home's public water supplier, see their annual water quality report:

https://www.cnic.navy.mil/regions/cnrma/om/environmental_support/water_quality_information.html

To answer any questions you may have on the sampling program contact the NSA Hampton Roads Public Affairs Officer at 757-836-1484. If you have any health questions or concerns, you are encouraged

to contact your health care provider or, if you are a TRICARE beneficiary, use the Mid-Atlantic Appointment Center to schedule an appointment with your primary care provider at 1-866-645-4584.

Enclosures:

1. Complete Test Results
2. Floor Plan of the Naval Support Activity Hampton Roads CDC

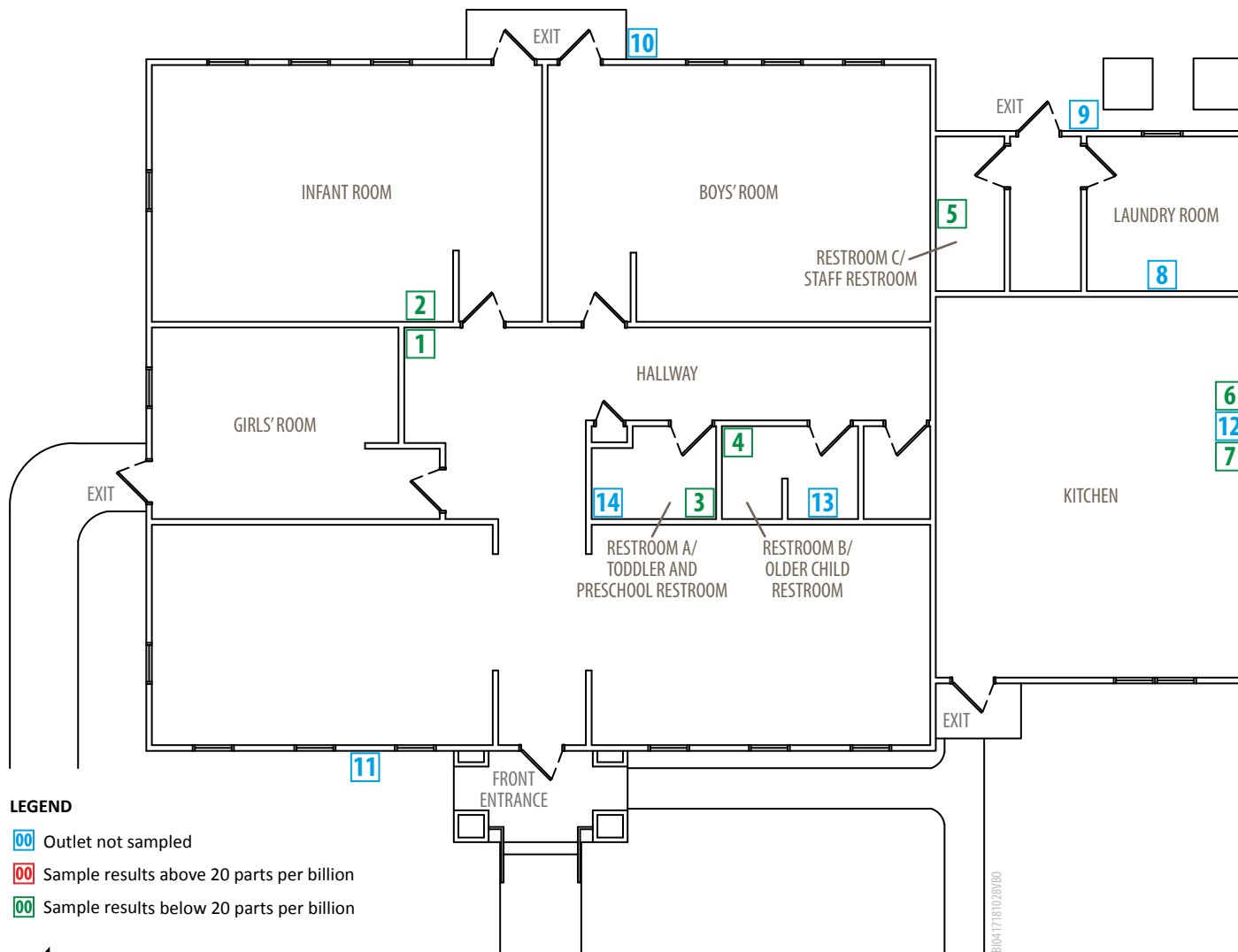
Sample Summary Results Table
Priority Areas Lead Testing and Corrective Actions (May 2018)
Naval Support Activity Hampton Roads, Child Development Home, Building SDA330

Table 1. Summary of Results

SAMPLING LOCATION DESCRIPTION					INITIAL SAMPLING RESULTS			RE-SAMPLING RESULTS			CORRECTIVE ACTIONS	POST REMEDIATION SAMPLING	
CATEGORY	SAMPLE ID NO.	SAMPLE ID	Outlet Description	Comments	First Draw (ppb)	Retest required?	Date Fixture Secured?	Lead Screening Level of 20ppb			Description	Recommended Level = 20ppb	
								Water Fountain 15 min. Follow up Flush Sample - Collected day before First Draw Sampling (ppb)	First Draw (ppb)	Follow up Flush - Collected 30 seconds after First Draw Sampling (ppb)		First Draw (ppb)	Follow up Flush - Collected 30 seconds after First Draw Sampling (ppb)
SAMPLING DATE					5/4/2018			N/A	N/A	N/A		N/A	
RESULTS DATE					5/14/2018			N/A	N/A	N/A		N/A	
DRINKING	7	HR-SDA330-K-FRIDGE-FD	Water dispenser at the refrigerator in the Kitchen		non-detect	No	N/A	N/A	N/A	N/A	N/A	N/A	N/A
COOKING	6	HR-SDA330-K-K-FD	Kitchen sink for dishwashing and food preparation in the Kitchen		non-detect	No	N/A	N/A	N/A	N/A	N/A	N/A	N/A
WASHING	1	HR-SDA330-HALL-HHW-FD	High handwashing faucet in the hallway		non-detect	No	N/A	N/A	N/A	N/A	N/A	N/A	N/A
WASHING	2	HR-SDA330-INFRM-HHW-FD	High handwashing faucet in the Infant Room		non-detect	No	N/A	N/A	N/A	N/A	N/A	N/A	N/A
WASHING	3	HR-SDA330-BATHA-HHW-FD	High handwashing faucet in Restroom A		1	No	N/A	N/A	N/A	N/A	N/A	N/A	N/A
WASHING	4	HR-SDA330-BATHB-HHW-FD	High handwashing faucet in Restroom B		4	No	N/A	N/A	N/A	N/A	N/A	N/A	N/A
WASHING	5	HR-SDA330-BATHC-HHW-FD	High handwashing faucet in Restroom C		2	No	N/A	N/A	N/A	N/A	N/A	N/A	N/A

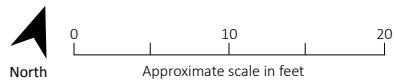
Table 2. Summary Statistics

CATEGORY	INITIAL SAMPLING RESULTS		RE-SAMPLING RESULTS			POST
	Lead Screening Level of 20ppb					
	First Draw (ppb)		Water Fountain Follow up Flush Sample - Collected day before First Draw Sampling (ppb)	First Draw (ppb)	Follow up Flush - Collected 30 seconds after First Draw Sampling (ppb)	First Draw (ppb)
Total Drinking	1		N/A	N/A	N/A	N/A
Total Drinking > 20 ppb	0		N/A	N/A	N/A	N/A
Total Cooking	1		N/A	N/A	N/A	N/A
Total Cooking > 20 ppb	0		N/A	N/A	N/A	N/A
Total Washing	5		N/A	N/A	N/A	N/A
Total Washing > 20 ppb	0		N/A	N/A	N/A	N/A
Total Samples	7		N/A	N/A	N/A	N/A
Total Samples > 20 ppb	0		N/A	N/A	N/A	N/A



LEGEND

- 00 Outlet not sampled
- 00 Sample results above 20 parts per billion
- 00 Sample results below 20 parts per billion



Building SDA330 – First Floor Plan

NSA Hampton Roads

Norfolk, Virginia



No.	Type of Fixture	Location Description	Exceeded?
1	High handwashing faucet	Hallway	No
2	High handwashing faucet	Infant Room	No
3	High handwashing faucet	Restroom A/Toddler and Preschool Restroom	No
4	High handwashing faucet	Restroom B/Older Child Restroom	No
5	High handwashing faucet	Restroom C/Staff Restroom	No
6	Kitchen sink for dishwashing and food preparation	Kitchen	No
7	Water dispenser at the refrigerator	Kitchen	No
8	Utility sink faucet	Laundry Room	Not sampled
9	Hose bib	Outside on the north side of Building SDA330	Not sampled
10	Hose bib	Outside on the northside of Building SDA330	Not sampled
11	Hose bib	Outside on the south side of Building SDA330	Not sampled
12	Kitchen sink sprayer used for dishwashing	Kitchen	Not sampled
13	Bathtub faucet	Restroom B/Older Child Restroom	Not sampled
14	Bathtub	Restroom A/Toddler and Preschool Restroom	Not sampled